

Light efficiency:

99 Lumen/Watt

Light quality:

CRI: 92.2

Color temperature:

2752 K

Output: 1907 lm

Peak: 3316 cd

Power: 19.3 W

PF: 0.99

No photo

Tracking number: [n/a](#)

Product name:

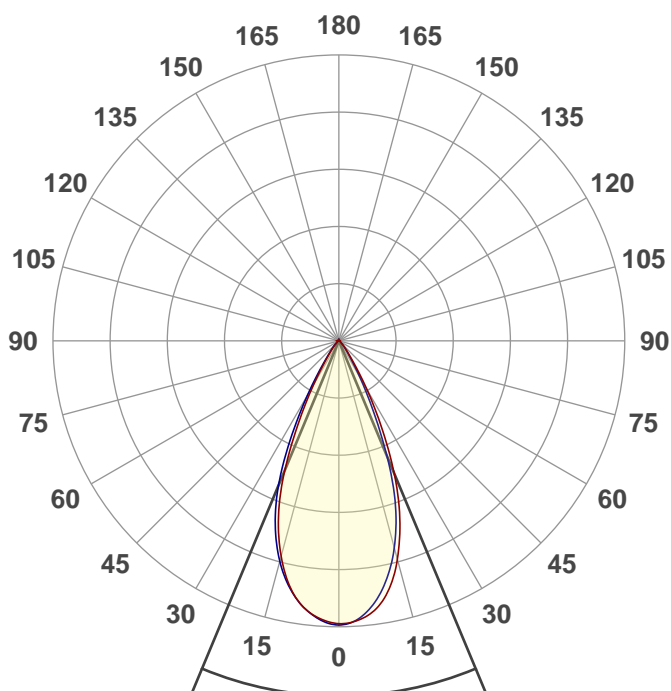
TR0606_L199274D

Item number:

Date and time:

6/10/2021 9:45:08 AM

Description:



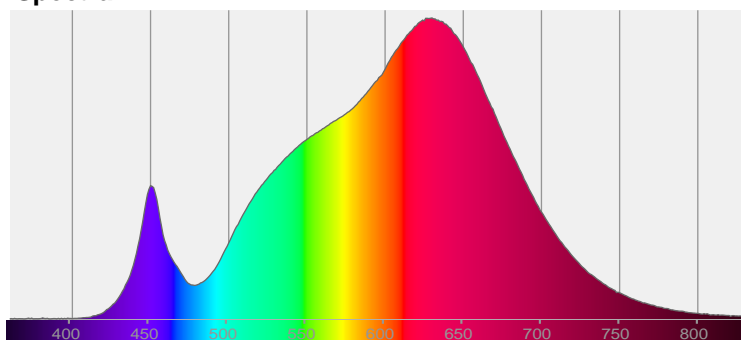
Beam angle

45.3°

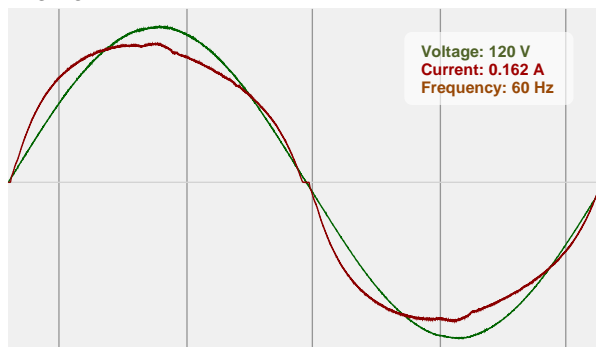


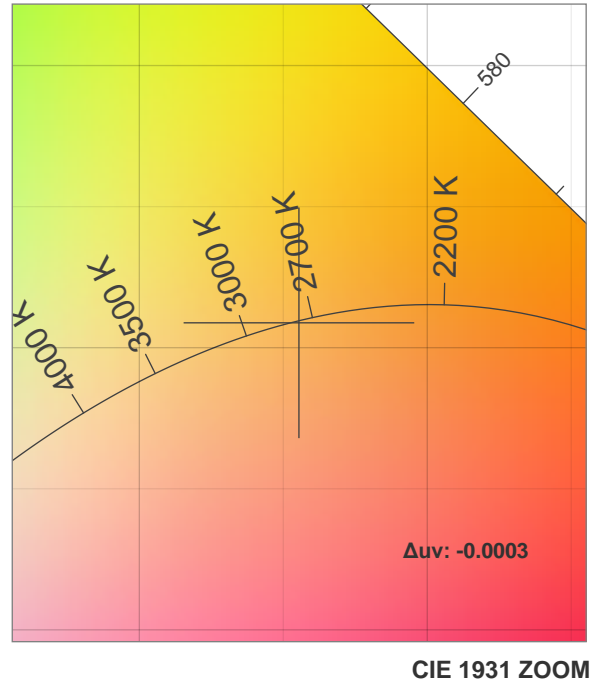
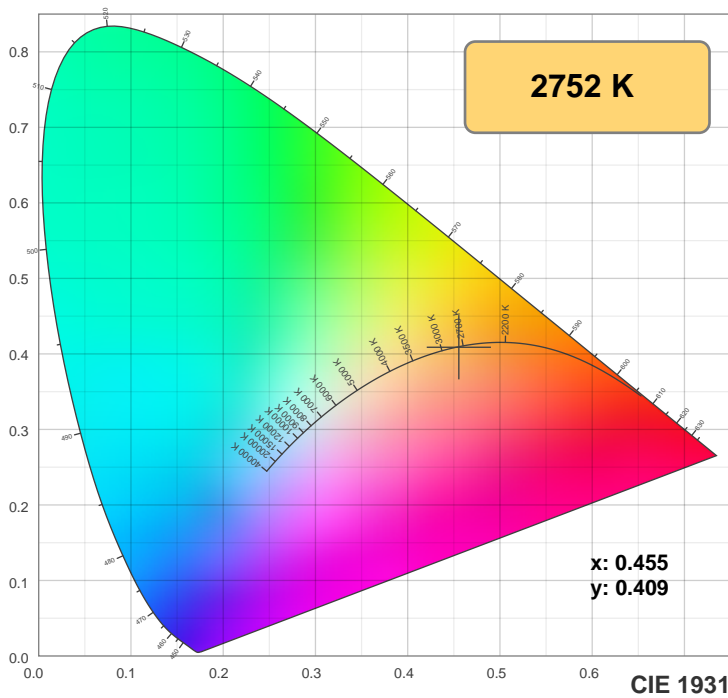
CIE 1931
x: 0.455
y: 0.409

Spectra

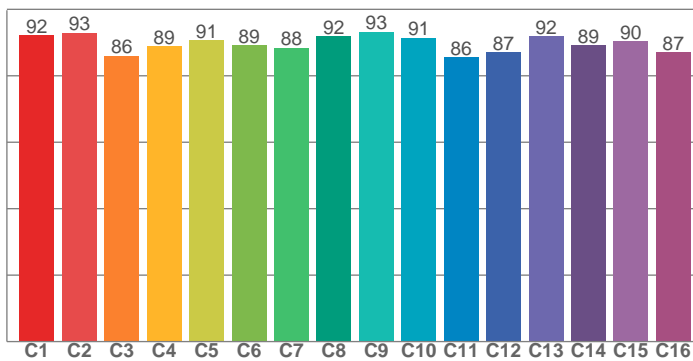


Power

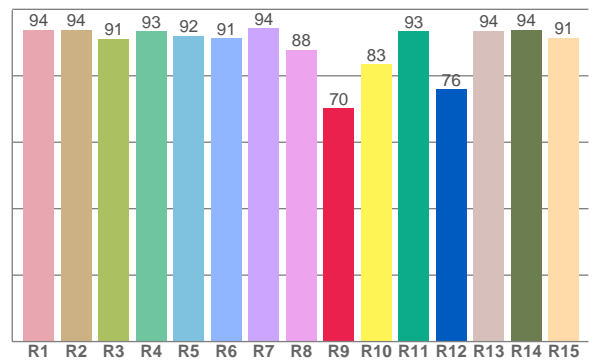




TM30: 89.8



CRI: 92.2 (R1-R8)



CRI R values, only R1-R8 are used to calculate final CRI value

R1	R2	R3	R4	R5	R6	R7	R8	R9	R10	R11	R12	R13	R14	R15
93.8	93.8	91.1	93.4	92.1	91.2	94.3	87.9	70.2	83.4	93.3	76.0	93.6	93.8	91.5

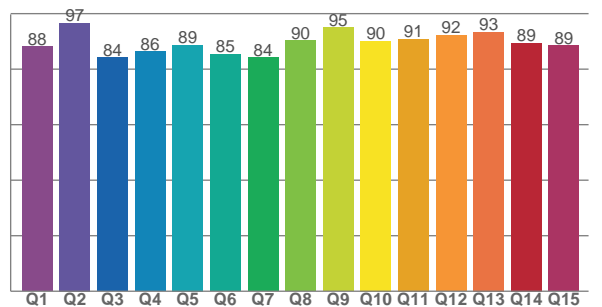
TM30 C values, 16 binned values out of total of 99 C values

C1	C2	C3	C4	C5	C6	C7	C8	C9	C10	C11	C12	C13	C14	C15	C16
92.2	92.8	86.1	88.8	90.7	89.2	88.5	91.9	93.2	91.3	85.6	87.1	91.9	89.1	90.4	87.0

CQS Q values

Q1	Q2	Q3	Q4	Q5	Q6	Q7	Q8	Q9	Q10	Q11	Q12	Q13	Q14	Q15
88.2	96.7	84.1	86.3	88.6	85.3	84.1	90.3	95.0	90.1	90.9	92.2	93.3	89.3	88.6

CQS: 88.8



Color parameters

Color temperature	Color rendering index	Red component	Color fidelity	Color gamut	Color quality scale	Color coordinate cie 1931	Color coordinate cie 1931	Color coordinate	Color coordinate	Color deviation from black body
CCT	CRI	CRI R9	TM30 Rf	TM30 Rg	CQS	x	y	u	v	Δuv
2752 K	92.2	70.2	89.8	103.0	88.8	0.455	0.409	0.260	0.351	-0.0003

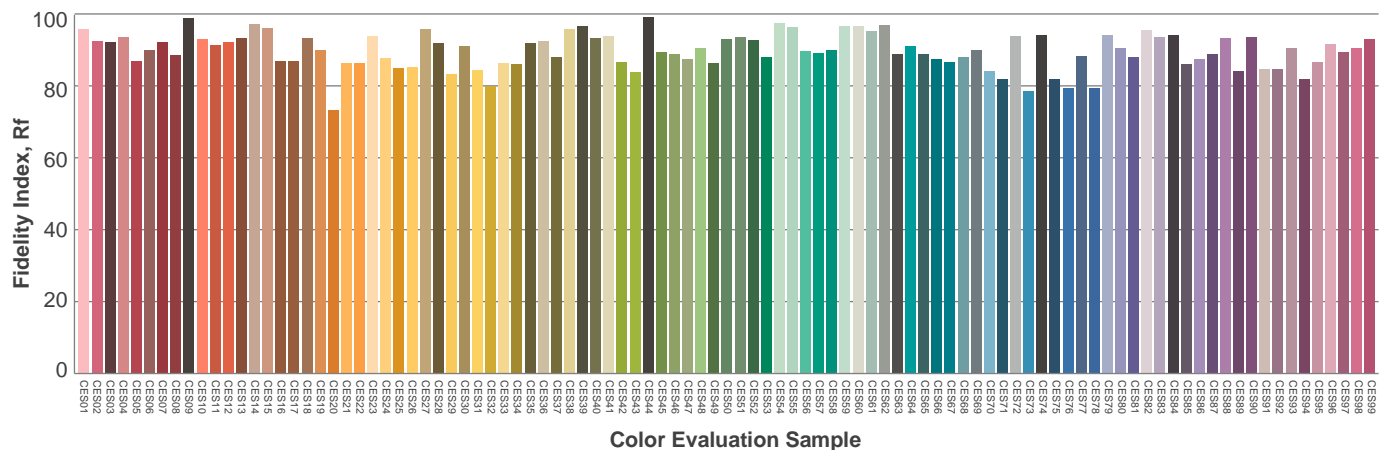
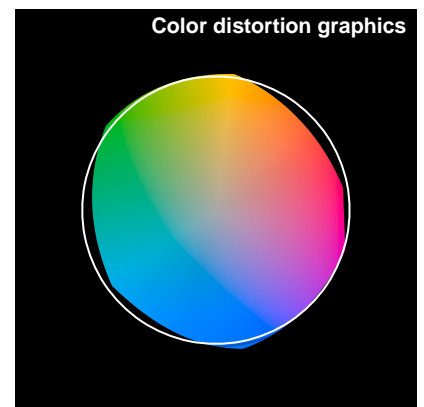
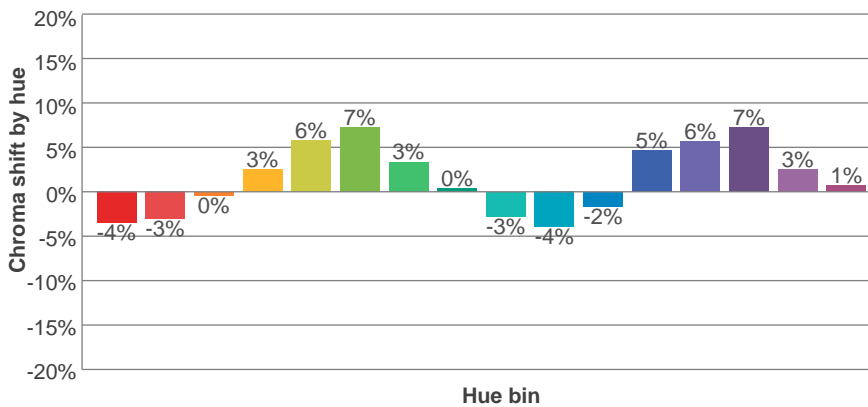
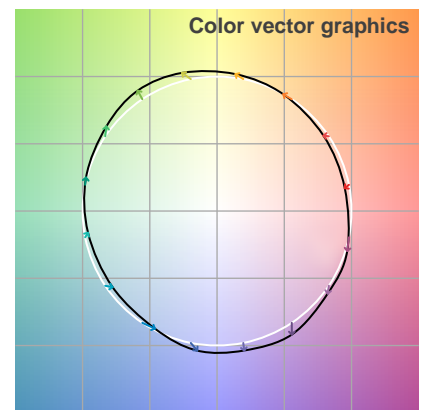
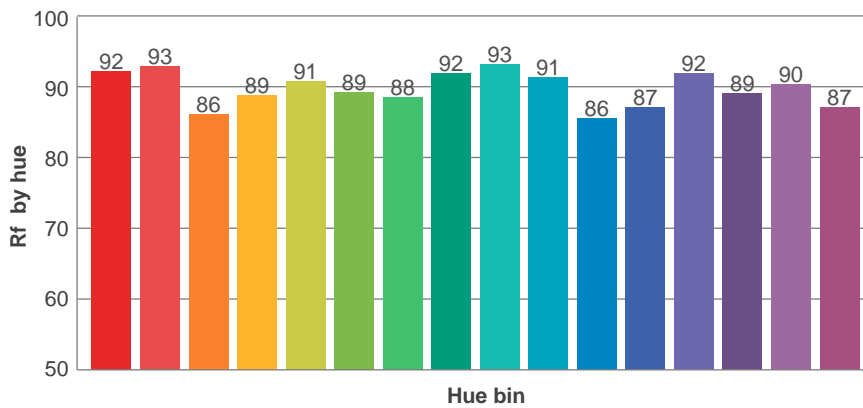
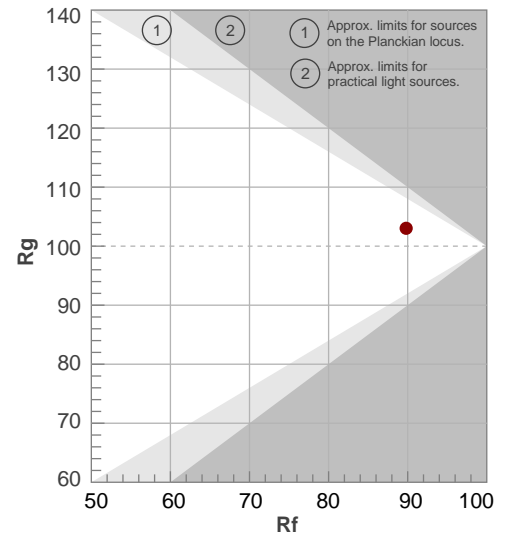
Rf 89.8

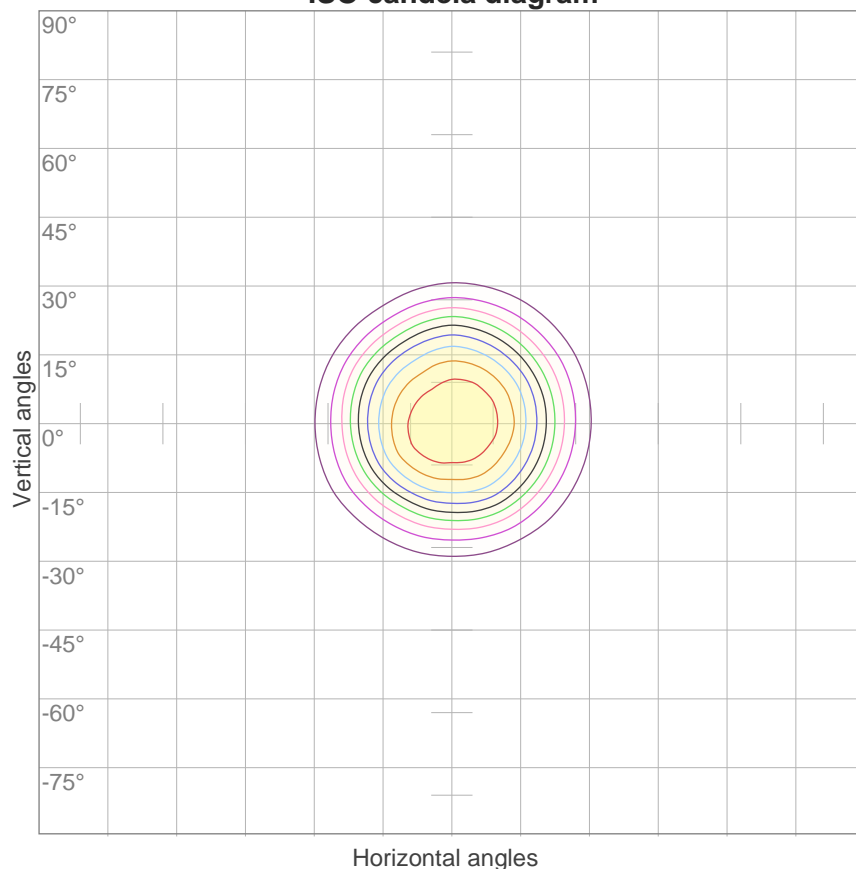
Fidelity index Rf

Rg 103.0

Gammut index Rg

Hue Bin	R _f	Graphic shifts (%)	
		Chroma	Hue
1	92	-4%	-2%
2	93	-3%	3%
3	86	0%	7%
4	89	3%	6%
5	91	6%	5%
6	89	7%	-1%
7	88	3%	-7%
8	92	0%	-5%
9	93	-3%	-3%
10	91	-4%	4%
11	86	-2%	10%
12	87	5%	6%
13	92	6%	0%
14	89	7%	-5%
15	90	3%	-5%
16	87	1%	-10%



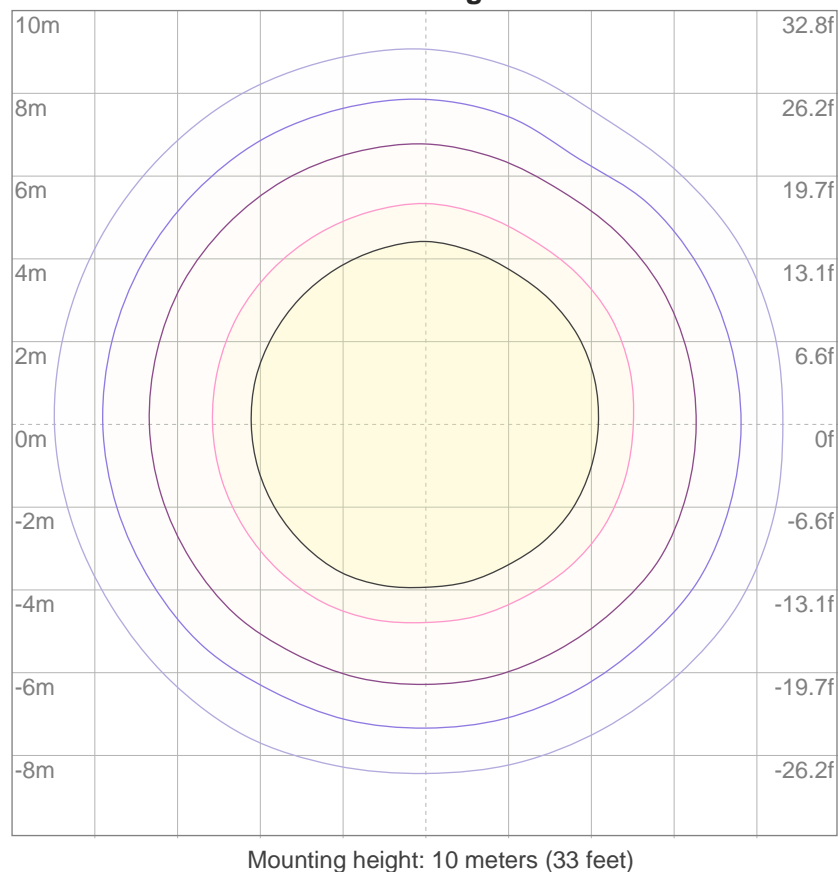
ISO candela diagram


10%	331 cd
20%	661 cd
30%	992 cd
40%	1323 cd
50%	1653 cd
60%	1984 cd
70%	2315 cd
80%	2645 cd
90%	2976 cd

Conditions:

Number of c-planes: 12

Candela at center: 3307 cd

ISO lux diagram


3%	0.992 lx
5%	1.65 lx
10%	3.31 lx
30%	9.92 lx
50%	16.5 lx

Conditions:

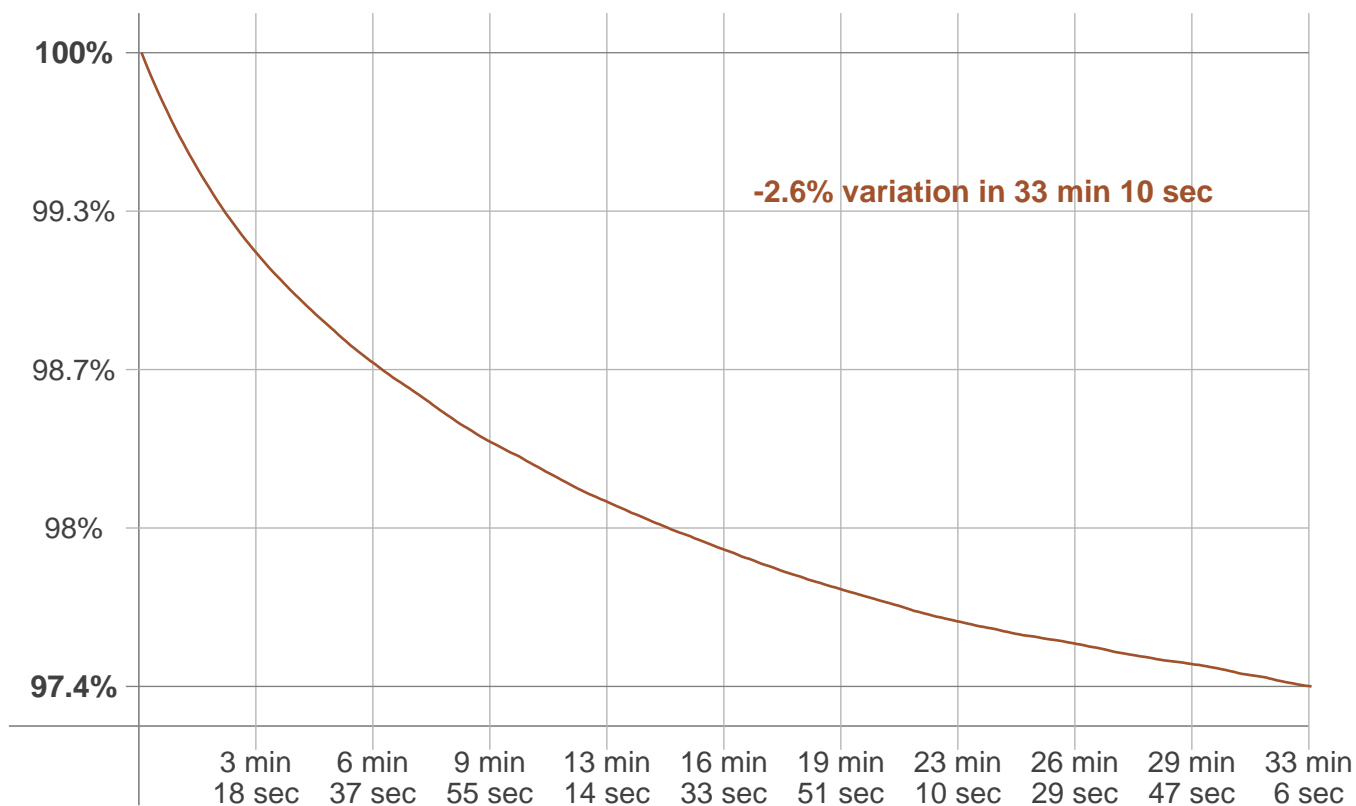
Number of c-planes: 12

Lux at center: 33.1 lx

*Lux distribution on a surface
when lamp is mounted at 10
meters from the surface.*

Stabilization

Warmup curve



Warmup result

Warmup time:	33 min 10 sec
Warmup variation	-2.7%

Warmup conditions

Stable period:	15 min
Stable change max:	0.5%
Minimum time:	30 min

Color temperature change

CCT start	CCT change	CCT end
2756 K	-4 K	2752 K

Output change

Output start	Output change	Output end
1958 lm	-51 lm	1907 lm